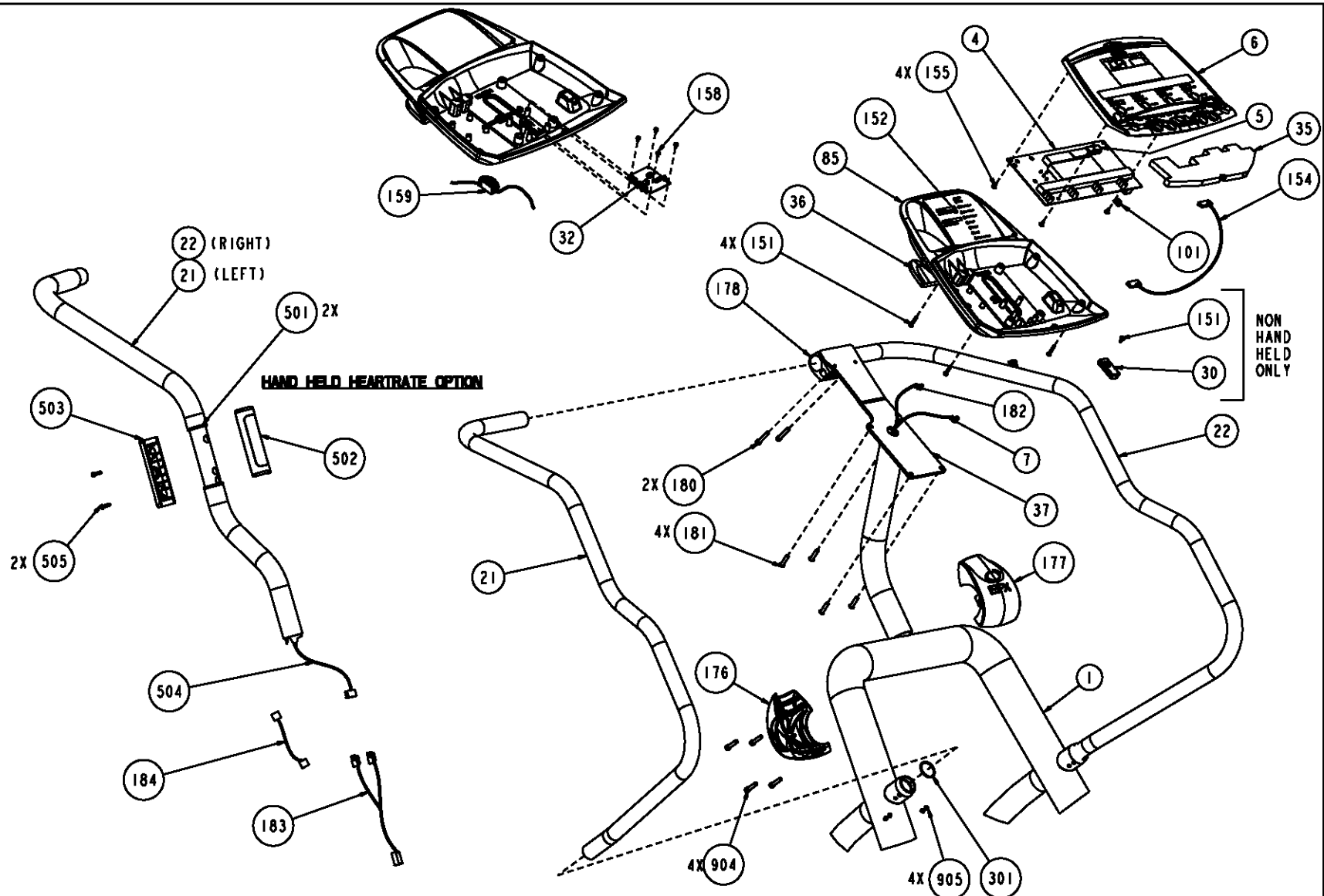
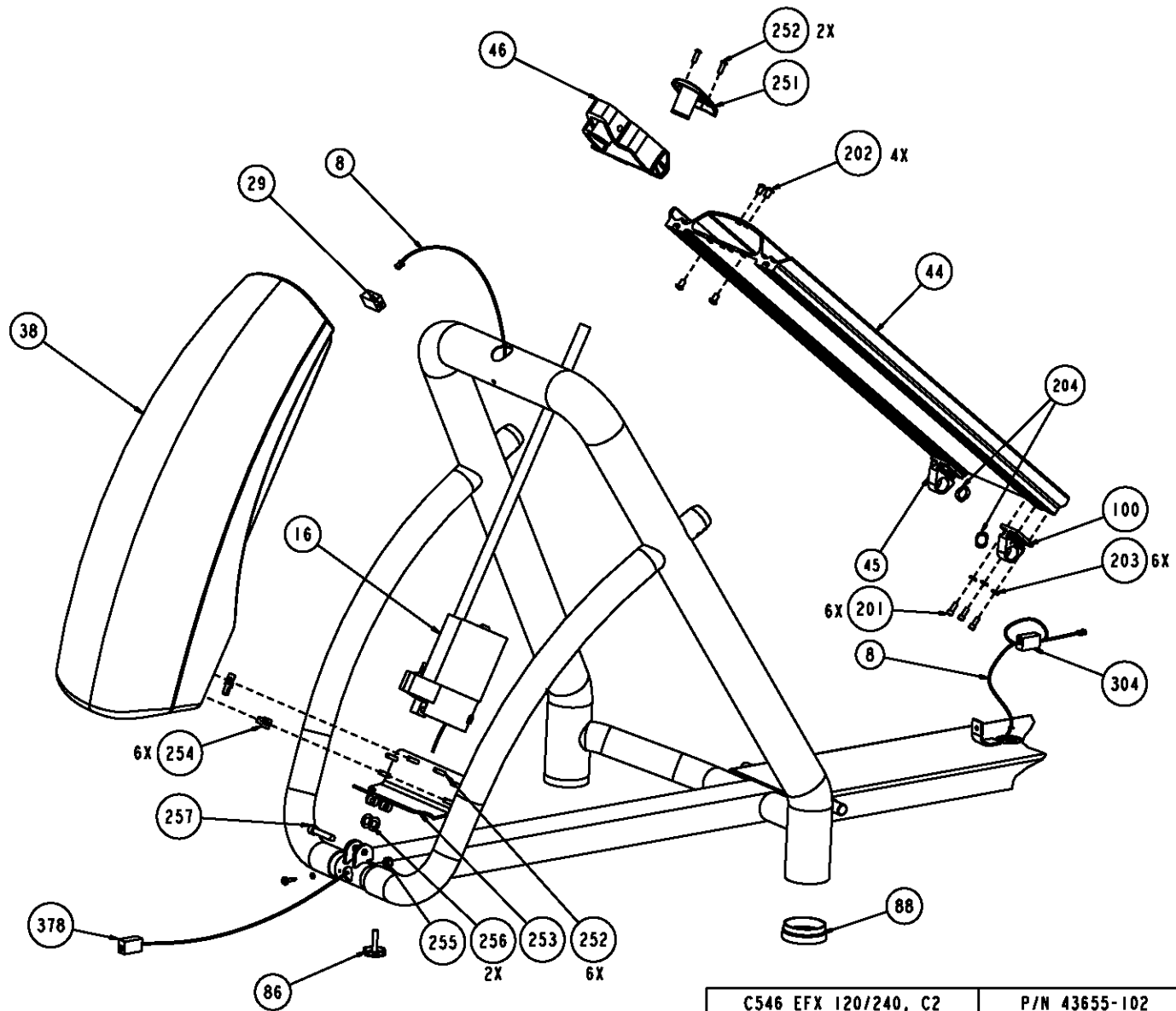


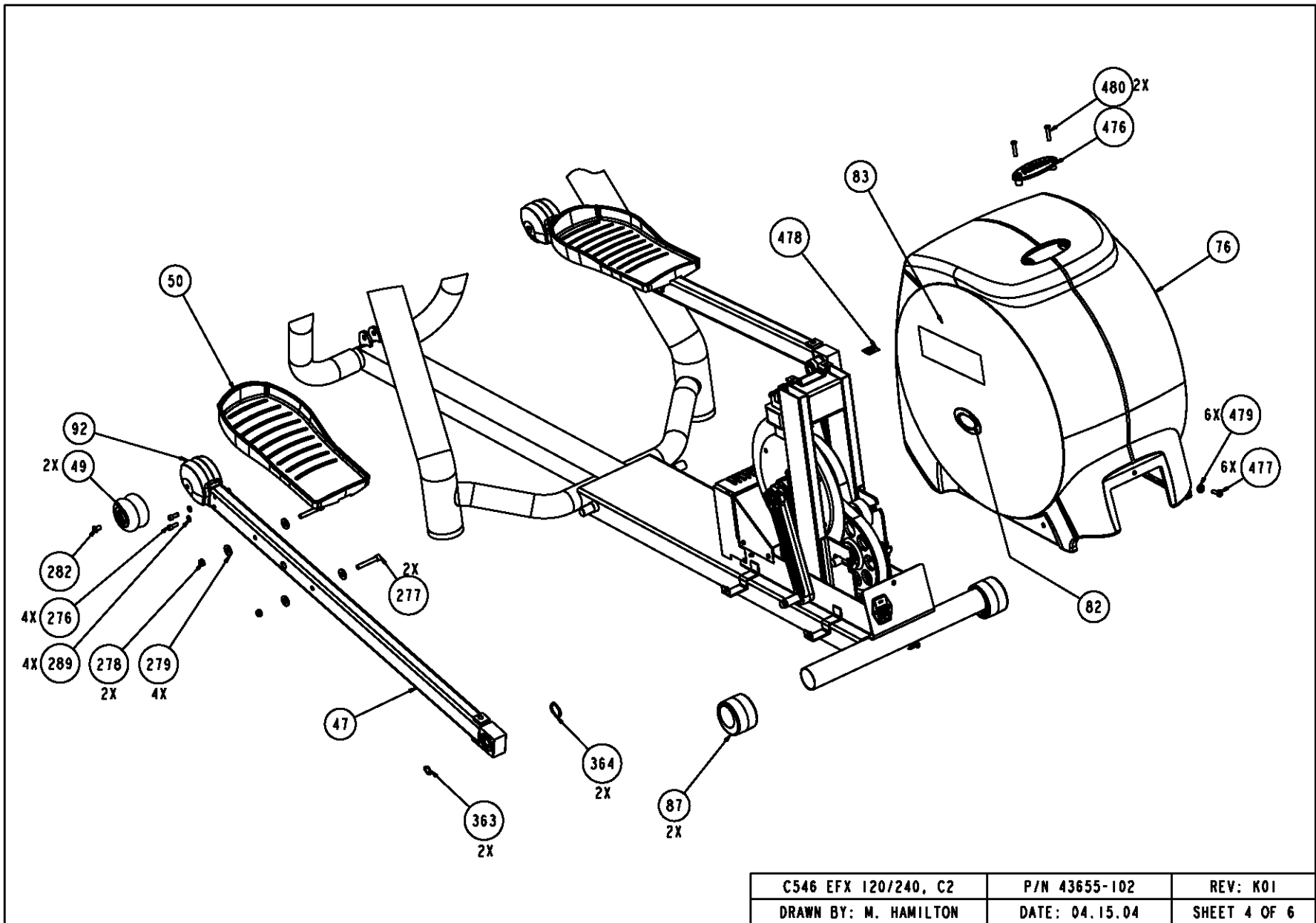
C546 EFX 120/240, C2	P/N 43655-102	REV: K01
DRAWN BY: M. HAMILTON	DATE: 04.15.04	SHEET 1 OF 6



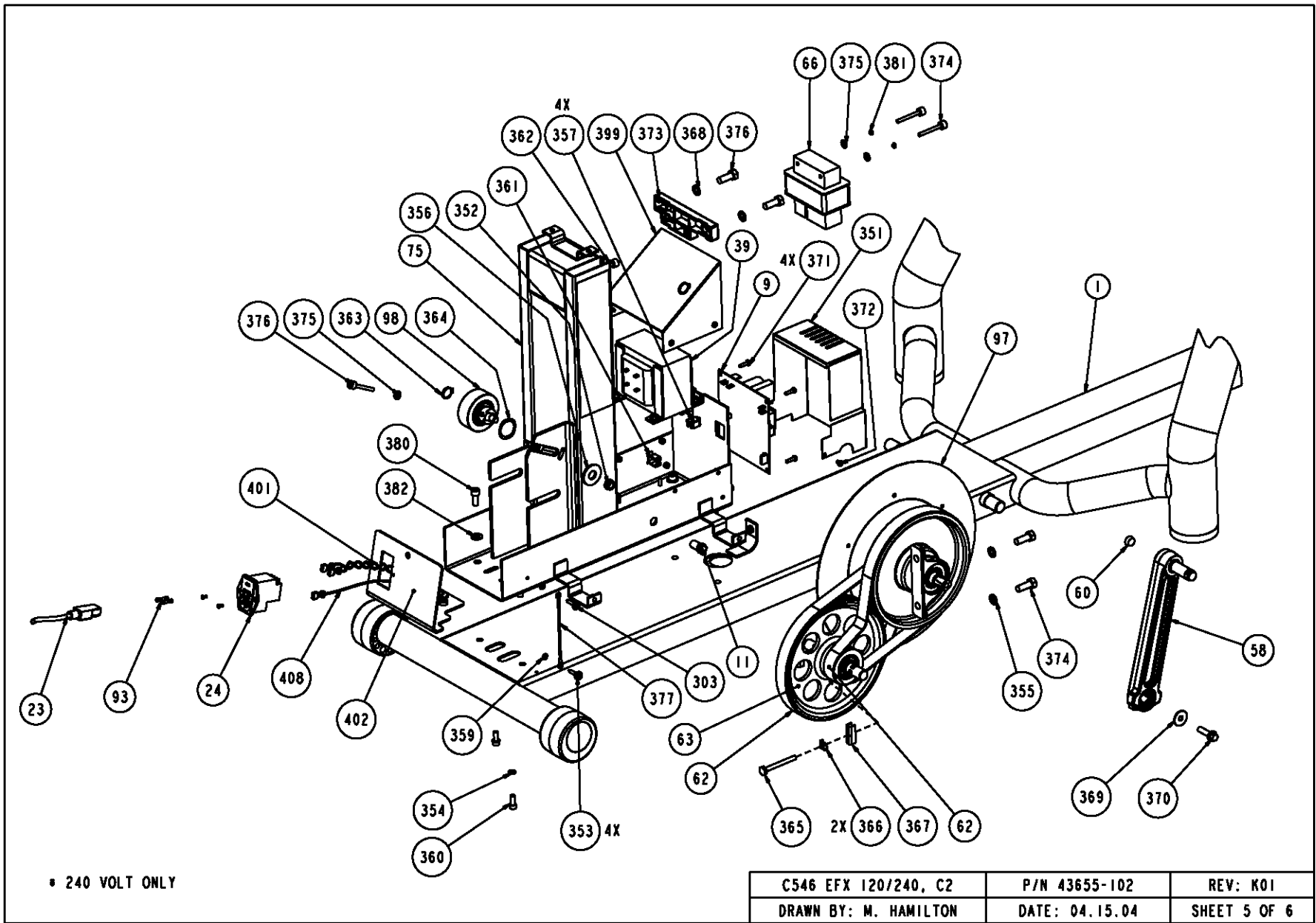
C546 EFX 120/240, C2	P/N 43655-102	REV: K01
DRAWN BY: M. HAMILTON	DATE: 04.15.04	SHEET 2 OF 6



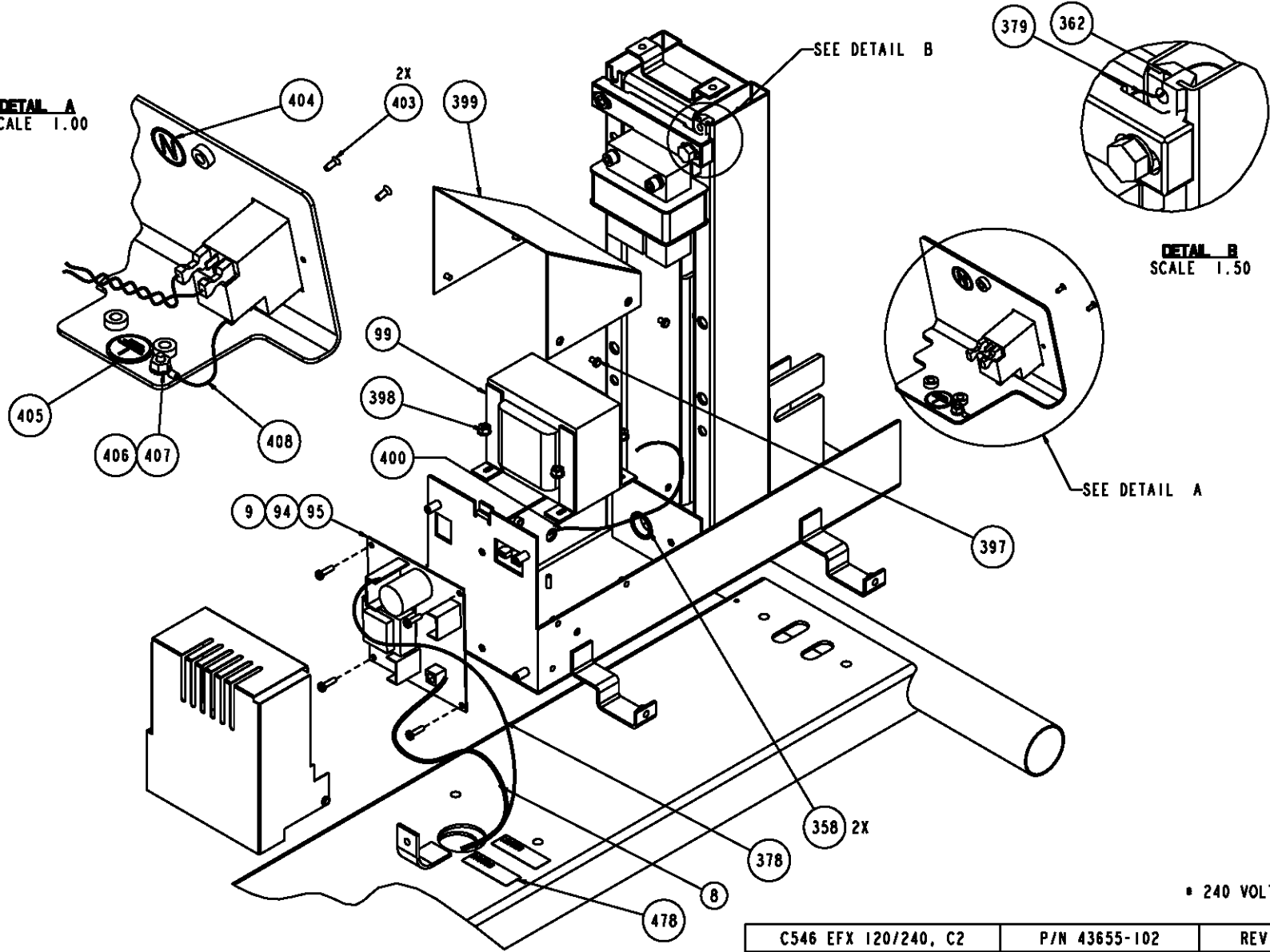
C546 EFX 120/240, C2	P/N 43655-102	REV: K01
DRAWN BY: M. HAMILTON	DATE: 04.15.04	SHEET 3 OF 6



C546 EFX 120/240, C2	P/N 43655-102	REV: K01
DRAWN BY: M. HAMILTON	DATE: 04.15.04	SHEET 4 OF 6



DETAIL A
SCALE 1.00



DETAIL B
SCALE 1.50

• 240 VOLT ONLY

C546 EFX 120/240, C2	P/N 43655-102	REV: K01
DRAWN BY: M. HAMILTON	DATE: 04.15.04	SHEET 6 OF 6

Bubble #	OEM Number	Description
8	PPP00000044905108	ASSY,CBL,MOD,8P8C,1-1,SILVER,108 in.
24	PPP000000012167102	PWR ENTRY MOD & FILTER,250VAC,W/2.5
29	PPP000000011415102	COUPLER,MOD,8P8C,INLINE,SNAP-IN
36	PPP000000043329102	WIRE FORM,PLASTIC,COMMERCIAL
47	PPP000000050570101	ASSY, STAIRARM/ RAIL PIVOT,C546
49.01	PPP000000050588102	EFX WHEEL & COVER REPLACEMENT KIT
50	PPP000000037314108	PEDAL, FOOT
62	PPP000000010217119	BELT,POLY-V,32 , 320J10
87	PPP000000044916102	FOOT, ADJUSTABLE
89	PPP000000038264103	ASSY, RAIL, PIVOT BLOCK/BEARING
92	PPP000000043702504	WHEEL, COVER, COMMERCIAL, PT
93	PPP000000012223250	FUSE,TIME-DELAY,2.5A,250V,5X20MM
96	PPP0000ADHN040001	RING,RETAINER,INTERNAL,40MM
101	PPP000000012264101	RJ-45 TELEPHONE JACK PLUG
152	PPP000000037437102	LABEL, FUSE, FIRE HAZARD
158	PPP0000MGCN013025	SCREW,MCH,6-32X1/4,PANHD,PHIL,
160	PPP000000010123102	CABLE TIE, 3-7/8 LONG,WHITE,NYL
187	PPP000000037235501	LABEL, CAUTION: MOVING PARTS
202	PPP00000TCNN031050	BHCS,5/16-18 X .50,SSTL
204	PPP0000WAHNN075001	WASHER,WAVE,NONSPLIT,.750X1.072X.01
250	PPP000000012223250	FUSE,TIME-DELAY,2.5A,250V,5X20MM
252	PPP00000TFTN025075	SCREW,BTHD,1/4-20X3/4,BLK SHARPERIZ
277	PPP00000TCNN031050	BHCS,5/16-18 X .50,SSTL
279	PPP00000WPNN038008	WASHER,FLT,5/16X.875X.104,SS
282	PPP00000TCNN031050	BHCS,5/16-18 X .50,SSTL
289	PPP00000WPNN026003	WASHER, FLAT, .255 X .468 X .029, S
301	PPP000000011278101	CABLE CLAMP,INSERT
304	PPP000000012153101	FERRITE,CLAMP-ON,RND CABLE,28 MATL
353	PPP00000PKCN019050	SCREW,S/T,#10X1/2,WSHHXHD,ZN
354	PPP0000WATNN025003	WASHER, LK-INT, ID=.25,
355	PPP00000WRCN038011	WASHER,GRADE 8,3/8,13/32 ID,13/16OD

357	PPP000000011278101	CABLE CLAMP,INSERT
358	PPP000000011276101	BUSHING,SNAP,SPLIT,ID=51/64,
359	PPP0000WATNN020002	WASHER,INTERNAL TOOTH LOCK,#10,STL
360	PPP00000CATN025063	SHCS,1/4-20 X .625,STL,BLK SHRP
362	PPP000000011284101	GROM, HORSE SHOE, (Z-16555)
363	PPP00000ABHN017001	RING, RETAINER, EXTERNAL
364	PPP0000WAGNN062001	WASHER,WAVE,OVERLAP,TRIPLE,.620,STL
365	PPP00000HACN025250	SCREW,1/4-20X2-1/2,HEX,GR 2,ZN
366	PPP000000037855103	TAB, LOCKING
367	PPP000000037385101	BRACKET, TENSIONER
369	PPP00000WNNN032009	WASHER,FLT, .321X1.00X.090 THK
371	PPP00000MGCN016063	SCREW,MCH,8-32X5/8,PANHD,PHIL,
372	PPP00000MGCN016025	SCREW,MCH,8-32X1/4,PANHD,PHIL,
375	PPP00000WACN019005	WASHER, FLT, #10X.500X.049,ZN
380	PPP00000CATN031075	SCREW,SKHD,5/16-18X0.75,BLK SHARPER
381	PPP0000WALCN019005	WASHER, #10 SPLIT LOCK, ZINC
382	PPP00000WCCN031008	WASHER, FLT, 5/16X.875X.083
477	PPP00000TFTN025075	SCREW,BTHD,1/4-20X3/4,BLK SHARPERIZ
478	PPP000000037235501	LABEL, CAUTION: MOVING PARTS
479	PPP00000WNKN026006	WASHER,FLT,1/4X.625X.063,BLK ZN
501	PPP000000010115113	O-RING, ROUND, 1.25ID X .139
502	PPP000000042713102	HHHR SENSOR, TOP
503	PPP000000042714102	HHHR SENSOR, BOTTOM
505	PPP00000TCNN016075	SCREW, BTHD, 8-32X.75,SS
902	PPP000000010186103	WRENCH, ALLEN, 3/16